
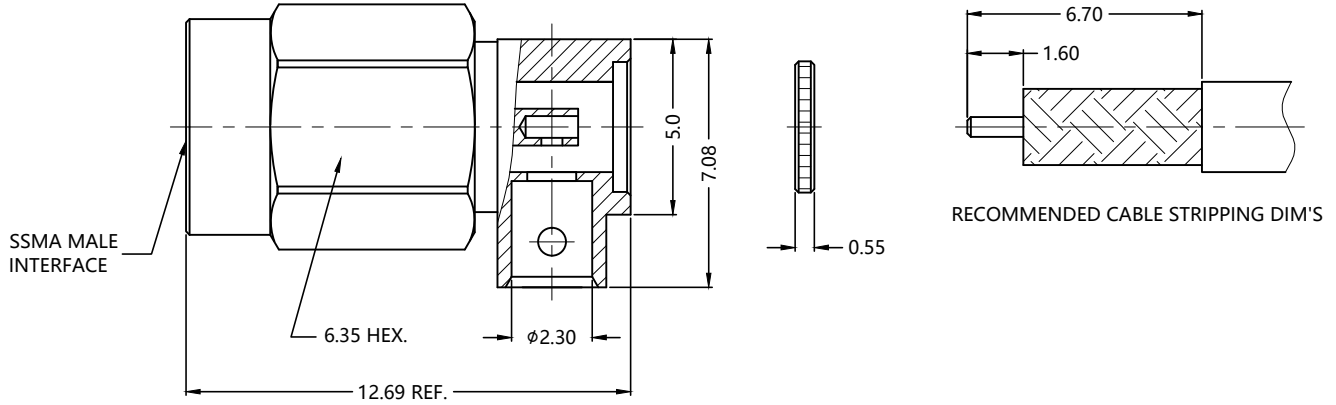


REV.	DESCRIPTION	ECN NO.	NAME	DATE	 ALL PARTS MUST MEET TO RoHS REQUIREMENTS
0	FIRST EDITION	N/A	WYJ	2016-07-25	
1	NEW FRAME	N/A	SYH	2020-07-07	

REMARKS:
 1.ADDS SIZE:2.44mm
 2.CONTACT PIN TO SOLDER



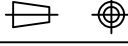
MATERIALS AND PLATING			UNIT: MICRO-INCHES		ELECTRICAL CHARACTERISTICS	
PART NAME	MATERIALS	PLATING				
BODY/SHELL	BRASS C3604	GOLD PL. 3u"/NICKEL/COPPER	IMPEDANCE		50 Ω	
INSULATOR	PTFE ASTM-D-1710	N/A	VOLTAGE RATING		250 V(rms)	
CONTACT PIN	PHOSPHOR BRONZE	GOLD PL. 30u"/NICKEL/COPPER	FREQUENCY RANGE		DC ~ 18 GHz	
COVER	BRASS C3604	GOLD PL. 3u"/NICKEL/COPPER	DIELECTRIC WITHSTANDING VOLTAGE		>500 V	
			CONTACT RESISTANCE		CENTER CONTACT	<4.0 mΩ
					OUTER CONTACT	<2.0 mΩ
			INSULATION RESISTANCE		>1000 MΩ	
			INSERTION LOSS		<0.05x _v √F(GHz)dB	
			VSWR		<1.35	
			3RD INTERMODULATION		N/A	

MECHANICAL CHARACTERISTICS	
FORCE TO ENGAGE AND DISENGAGE	N/A
CENTER CONTACT RETENTION FORCE	>4 lbs
RECOMMENDED COUPLING TORQUE	5.3 ~ 7.0 in-lbs
COUPLING NUT RETENTION FORCE	>60 lbs
DURABILITY	>500 cycles

ENVIRONMENTAL PARAMETER	
TEMPERATURE RANGE	-55 °C ~ +125 °C

*** CUSTOMER OUTLINE DRAWING**

UNLESS OTHERWISE SPECIFIED:
 1) EDGES : C0.15 MAX ;
 2) REMOVE ALL BURRS ;
 3) SURFACE ROUGHNESS : Ra1.6 ;
 4) UNITS : mm ;
 5) DIMENSIONS TOLERANCES
 DECIMALS : .x ±0.3 .xx ±0.2 .xxx±0.1;
 ANGLES : ± 5°.

THIRD ANGLE PROJECTION		
APPROVED :	CUSTOMER P/N :	
CHECKED :	SCALE :	1 : 1
DRAWING :	DATE :	2020-07-07
	PAGE :	1/1


 TITLE : SSMA MALE R/A
 SOLDER FOR .086" CABLE
 DRAWING NO. : 5SAM15R-S01-001
 COMPANY WEBSITE : www.slkcorp.com

CUSTOMER OUTLINE DRAWING